

WHAT'S ON

LONDON 2011-2012

Showbiz
Events & Travel

EMAIL: setnz@showbizeta.com | PHONE: 0800 SHOWBIZ (0800.746.9249)

www.showbizeta.com

THE 39 STEPS

COMEDY

John Buchan's *The 39 Steps*, memorably filmed by Alfred Hitchcock in 1935 - is thrillingly adapted for the West End stage. Nothing has been cut from this hilarious and spectacular version of Britain's most spell-binding thriller - legendary scenes include the chase on the Flying Scotsman, the escape on the Forth Bridge, the first theatrical bi-plane crash ever staged and the death-defying (or nearly!) finale at the London Palladium! With four actors playing a minimum of one hundred and thirty nine roles, this is the most astonishing theatrical tour de force of the year.

SCHEDULE: Tuesday – Sunday. Dark Monday.

VENUE: Criterion Theatre, Piccadilly Circus, London, W1. Nearest Tube: Piccadilly Circus



BACKBEAT

MUSICAL

It's the story of how The Beatles 'became' The Beatles, embarking on their search for success from the famous docks of Liverpool, and how the triangular relationship between the band's original bassist Stuart Sutcliffe, the German photographer Astrid Kirchherr, and his best friend John Lennon, became an intrinsic part of the Beatles' story – and put them on an unstoppable trajectory onto the world stage. Featuring the rock 'n' roll classics that the Beatles cut their teeth with – Twist & Shout, Rock 'N' Roll Music, Long Tall Sally, Please Mr Postman, and Money.

SCHEDULE: Monday – Saturday. Dark Sunday.

VENUE: Duke of York's Theatre, St. Martin's Lane, London, WC2N. Nearest Tube: Leicester Square



BILLY ELLIOT THE MUSICAL

MUSICAL

Set in the North East of England, *Billy Elliot* is a funny, heart-warming and feel-good celebration of one young boy's dream. This original story captured hearts worldwide when the film was released in October 2000; it broke box office records worldwide and was nominated three Golden Globes, three Oscars and 13 Bafta Awards, among others. The original multi-award winning creative team from the film - director Stephen Daldry, writer Lee Hall and choreographer Peter Darling - are joined by music legend, Elton John, to bring BILLY ELLIOT to life on the London stage.

SCHEDULE: Monday – Saturday. Dark Sunday.

VENUE: Victoria Palace Theatre, Victoria Street, London, SW1. Nearest Tube: Victoria



BLOOD BROTHERS

MUSICAL

Few musicals have received quite such acclaim as *Blood Brothers*. It was recently voted MOST POPULAR BRITISH MUSICAL OF ALL TIME by readers of *The New York Times* and has scooped up four awards for Best Musical in London and seven Tony Award® nominations on Broadway. Written by Willy Russell, one of England's leading contemporary dramatists, it tells the captivating and moving tale of twins who, separated at birth, grow up on opposite sides of the tracks.

SCHEDULE: Monday – Saturday. Dark Sunday.

VENUE: Phoenix Theatre, Charing Cross Road, London, WC2. Nearest Tube: Leicester Square



A BRITISH SUBJECT

PLAY

At the age of 18, Mirza Tahir Hussain, a British Subject, arrived in Pakistan. 24 hours later a taxi driver was dead and Tahir was tried for his murder. Condemned to hang in the Criminal Court, he spent 18 years on Death Row. Don Mackay of the Daily Mirror was the only journalist to visit him in that time. Arriving in London after a hugely successful run in New York and the Edinburgh Festival, *A British Subject* is an extraordinary true-life tale of international politics and the media colliding with justice, civil liberties and ultimately, faith.

SCHEDULE: Monday – Saturday. Dark Sunday. Performances through 02 to 26 November.

VENUE: Arts Theatre, 6/7 Great Newport St, London, WC2H. Nearest Tube: Leicester Square



BROKEN GLASS

PLAY

Antony Sher and Tara Fitzgerald star as Phillip and Sylvia Gellburg, a New York couple living in Brooklyn in 1938, in Arthur Miller's Olivier-winning drama. Phillip, obsessed with work and his own desire to assimilate, has little time for his wife, but when Sylvia suddenly becomes paralysed after reading newspaper reports of Kristallnacht in Germany, Dr. Harry Hyman is called in. As he gets closer to the source of Sylvia's affliction, a relationship develops that could have devastating consequences on the family, and themes of guilt, personal tragedy and love start to unfold.

SCHEDULE: Monday – Saturday. Dark Sunday. Performances through 10 December.

VENUE: Vaudeville Theatre, Strand, London, WC2R. Nearest Tube: Charing Cross



CHICAGO

MUSICAL

Be dazzled and dazzled by CHICAGO, what's been called "the sharpest, slickest show on the block". It's the kiss-and-tell story of chorus girl Roxie Hart who kills her lover; Velma Kelly, the glamorous double-murderer and Billy Flynn, the slick and manipulative lawyer keeping them from death row while promising to make them stars, has all the topicality of our celebrity-seeking times. With a sizzling score and stunning Fosse-inspired choreography, this multi award-winning production is now the longest running Broadway musical to play London's West End.

SCHEDULE: Monday – Saturday. Dark Sunday. Performances resume 07 November.

VENUE: Garrick Theatre, Charing Cross Road, London, WC2. Nearest Tube: Leicester Square



WHAT'S ON

LONDON 2011-2012

Showbiz
Events & Travel

EMAIL: setnz@showbizeta.com | PHONE: 0800 SHOWBIZ (0800.746.9249)

www.showbizeta.com

A CHRISTMAS CAROL WITH SIMON CALLOW

EVENT

The old miser, Ebenezer Scrooge is visited on Christmas Eve by the spirit of his late business partner Jacob Marley and three other ghosts... Taking the Dickens' own performing version as a starting point, Simon Callow and director Tom Cairns have created a work of total storytelling: phantasmagorical, hilarious, heart-breaking, visionary, a celebration of goodness, a plea for justice and a promise of redemption.

SCHEDULE: Tuesday – Saturday, with exceptions - see online calendar. Performs 08 Dec to 14 Jan.

VENUE: Arts Theatre, 6/7 Great Newport St, London, WC2H. Nearest Tube: Leicester Square



COOL HAND LUKE

PLAY

Beneath a scorching Florida sun, Boss Godfrey watches the chain gang. Keeps his eye on Cool Hand Luke. War hero, trouble-maker, inspiration to his fellow inmates. And just the man Boss wants to crush... Starring Marc Warren as the charismatic rebel, COOL HAND LUKE is the hard-hitting story of a true original. He'll play it real cool in the face of brutality. He'll always get back up after a beating. He'll eat fifty eggs in an hour, to win a bet. A man who won't conform no matter what it costs. Cool Hand Luke is the raw, uncompromising tale of sticking it to "The Man".

SCHEDULE: Monday – Saturday. Dark Sunday.

VENUE: Aldwych Theatre, Aldwych, London, WC2B. Nearest Tube: Covent Garden



CHRISTMAS WITH THE RAT PACK

MUSICAL

The coolest Christmas party in town! Starting 20 December, take a trip back in time to the glamorous, glitzy nights of Las Vegas in the late 1950s and early 60s where, in the company of three of the world's most popular entertainers, you will experience Frank Sinatra, Sammy Davis Jr & Dean Martin performing a host of seasonal classics including Baby It's Cold Outside, Rudolph the Red Nosed Reindeer, Let it Snow, Let it Snow, White Christmas, Winter Wonderland & Auld Lang Syne alongside The Lady is a Tramp, Mr Bojangles, I've Got You Under My Skin, and more!

SCHEDULE: Monday – Saturday. Dark Sunday. From 07 Jan see THE RAT PACK LIVE FROM LAS VEGAS.

VENUE: Wyndham's Theatre, Charing Cross Road, London WC2H. Nearest Tube: Leicester Square



CRAZY FOR YOU

MUSICAL

Hailed by critics as a musical triumph, this smash hit musical has received more five star reviews than any other West End musical this year. Packed full of George and Ira Gershwin's classic songs including "I Got Rhythm", "Someone To Watch Over Me", "Embraceable You" and "Nice Work If You Can Get It", it boasts not only some of the finest songs ever written but some of the most dynamic choreography ever seen on the London stage. Don't miss the opportunity to witness this 'glorious' (Daily Telegraph) musical and fall crazy in love all over again.

SCHEDULE: Monday – Saturday. Dark Sunday. Performances resume 08 October.

VENUE: Novello Theatre, Aldwych, London, WC2B. Nearest Tube: Drury Lane



DEATH AND THE MAIDEN

PLAY

Thandie Newton stars in Ariel Dorfman's explosive moral thriller directed by Jeremy Herrin. Beware of turning into the enemy you most fear. Years have passed since political prisoner, Paulina suffered at the hands of her captor: A man whose face she never saw, but can still recall with terrifying clarity. Tonight, by chance, a stranger arrives at the secluded beach house she shares with her husband Gerardo, a human rights lawyer. A stranger Paulina is convinced was her tormentor and must now be held to account.

SCHEDULE: Monday – Saturday. Dark Sunday. Performances from 13 October.

VENUE: Harold Pinter Theatre, Panton Street, London, SW1Y. Nearest Tube: Piccadilly Circus



DOCTOR FAUSTUS

PLAY

In Marlowe's great tragedy, the title character, restless for knowledge, forsakes scholarship for magic and makes a pact with the Devil: if the evil spirit Mephistopheles will serve him for 24 years, Faustus will yield his soul to the Devil after death. It isn't long before Faustus has doubts about the bargain, but Mephistopheles has plenty of entertainment at hand to distract Faustus from the terrifying reality of his position and the prospect of its agonising conclusion. Full of anarchic comedy and featuring Arthur Darvill (Rory currently on Doctor Who) as Mephistopheles.

SCHEDULE: Performance Schedule Varies - Please see calendar online. Through 02 October.

VENUE: Shakespeare's Globe Theatre, 21 New Globe Walk Bankside, London, SE1.



DREAMBOATS AND PETTICOATS

MUSICAL

Written by Marks and Gran, the team behind the popular sitcoms *Goodnight Sweetheart*, *Birds Of A Feather*, and *Shine On Harvey Moon*, will give you the greatest time of your life – taking you back to a time when each passing week brought another classic track. Featuring songs from Roy Orbison, The Shadows, Eddie Cochran, Billy Fury, Chuck Berry and many more.

SCHEDULE: Monday – Saturday. Dark Sunday.

VENUE: Playhouse Theatre, Northumberland Avenue, London WC2. Nearest Tube: Embankment



WHAT'S ON

LONDON 2011-2012

Showbiz
Events & Travel

EMAIL: setnz@showbizeta.com | PHONE: 0800 SHOWBIZ (0800.746.9249)

www.showbizeta.com

DRIVING MISS DAISY

PLAY

Two of the world's greatest living actors arrive in London to perform Alfred Uhry's timeless Pulitzer Prize-winning classic, direct from Broadway - the legendary Oscar® and Tony® Award-winner Vanessa Redgrave and Tony® Award-winning and Oscar®-nominated James Earl Jones. This charming, poignant and utterly compelling tale of the unlikely, long-lasting friendship that blossoms between a prickly, elderly Southern matriarch and her kind-hearted chauffeur, Hoke, is sparkingly funny and irresistibly heart-warming. Also starring Tony® Award-winner Boyd Gaines.



SCHEDULE: Monday – Saturday. Dark Sunday.

VENUE: Wyndham's Theatre, Charing Cross Road, London WC2H. Nearest Tube: Leicester Square

GHETTO KLOWN

PLAY

Multi-faceted performer JOHN LEGUIZAMO makes his UK debut in his Broadway hit GHETTO KLOWN. In Leguizamo's trademark style, he leads audiences on a fever-pitch adventure and heats up the stage with vivid accounts of where he's been and the colourful characters that have populated his life. Leguizamo takes audiences from his adolescent memories in Queens to the early days of his acting career during the outrageous 80s avant-garde theatre scene, and on to the sets of major motion pictures and his roles opposite some of Hollywood's biggest stars.



SCHEDULE: Monday – Saturday. Dark Sunday. Performances from 25 October through 12 November.

VENUE: Charing Cross Theatre, The Arches, Villiers St., London WC2N. Nearest Tube: Charing Cross

GHOST

MUSICAL

GHOST is a timeless fantasy about the power of love. Walking back to their apartment one night, Sam and Molly are mugged, leaving Sam murdered on a dark street. Sam is trapped as a ghost between this world and the next and unable to leave Molly who he learns is in grave danger. With the help of a phony storefront psychic, Oda Mae Brown, Sam tries to communicate with Molly in the hope of saving and protecting her. This breathtaking musical staging of one of the most popular films of all time is a gripping roller-coaster ride of romance, drama and excitement.



SCHEDULE: Monday – Saturday. Dark Sunday.

VENUE: Piccadilly Theatre, Denman Street, London, W1. Nearest Tube: Piccadilly Circus

THE GLOBE MYSTERIES

PLAY

Beginning with the creation and ending with the last judgement, The English Mysteries introduced aspects of medieval life into theatrical representations of the Bible. Lavish costumes, ballad singers and musicians bring a rich theatricality to Southwark this summer. Drawing on medieval traditions and inspired by the stories of the Bible, The Globe Mysteries celebrate the spirit of medieval street theatre and processional performance and take a fresh and contemporary look at The Mystery Plays as one of the most important influences on theatre.



SCHEDULE: Performance Schedule Varies - Please see calendar online. Through 01 October.

VENUE: Shakespeare's Globe Theatre, 21 New Globe Walk Bankside, London, SE1.

THE GOD OF SOHO

PLAY

A thief in heaven steals the divinity of the gods. Meanwhile down on earth some fetish items have been nicked from a reality TV star and she's facing exposure in the tabloids. Sex shops and comedy, gods and homeless people, all collide in a fierce, hectic and hilarious story about people looking for the divine. In Essex. As bracingly modern as Che Walker's The Frontline, which thrilled Globe audiences in 2008 and 2009, THE GOD OF SOHO is not for the faint-hearted. Bursting with dirty language and filthy content.



SCHEDULE: Performance Schedule Varies - Please see calendar online. Through 30 September.

VENUE: Shakespeare's Globe Theatre, 21 New Globe Walk Bankside, London, SE1.

JERSEY BOYS

MUSICAL

You know their songs...now discover their story! *Jersey Boys*, the story of Frankie Valli and The Four Seasons, is now open at the Prince Edward Theatre. Discover the rags-to-rock-to-riches tale of four boys working their way from the streets of New Jersey to the heights of international pop stardom. Featuring all the classic hits: "Sherry", "Big Girls Don't Cry", "Can't Take My Eyes Off You", "Bye Bye Baby (Baby Goodbye)", "Working My Way Back To You", "Walk Like A Man", "December 1963 (Oh What A Night)" and more.



SCHEDULE: Tuesday – Sunday. Dark Monday.

VENUE: Prince Edward Theatre, Old Compton Street, London, W1. Nearest Tube: Leicester Square

JERUSALEM

PLAY

Limited return engagement to the West End, direct from its Tony Award-nominated run on Broadway. Tony and Olivier-Award winner Mark Rylance recreates his wildly acclaimed, multi award-winning role as Johnny 'Rooster' Byron, former daredevil motorcyclist, modern-day Pied Piper, and wanted man. The council officials want to serve him an eviction notice, his son wants to be taken to the fair, a stepfather wants to give him a serious kicking and a motley crew of friends wants his ample supply of drugs and alcohol.



SCHEDULE: Monday – Saturday. Dark Sunday. Performances from 08 October.

VENUE: Apollo Theatre, Shaftesbury Avenue, London, W1. Nearest Tube: Piccadilly Circus

WHAT'S ON

LONDON 2011-2012

Showbiz
Events & Travel

EMAIL: setnz@showbizeta.com | PHONE: 0800 SHOWBIZ (0800.746.9249)

www.showbizeta.com

THE KILLING OF SISTER GEORGE

PLAY

Sister George (Meera Syal) is no nun, but a fictional character in a popular BBC radio soap about English village life. To boost ratings the character is axed and Mrs Mercy (Belinda Lang) confronts June Buckridge who has played the part for some 2000 performances. June has a domestic relationship with Alice McNaught, who shares her home and her bed. With the impending catastrophe of June's job lost the insecure relationship is taken advantage of and carnage and loss ensue. First performed in 1966 this play remains a witty and poignant comedy.

SCHEDULE: Monday – Saturday. Dark Sunday. Performances through 05 to 29 October.

VENUE: Arts Theatre, 6/7 Great Newport St, London, WC2H. Nearest Tube: Leicester Square



LA SOIREE

EVENT

With an ever-changing line-up of the most outrageous, hilarious, beautiful and downright bizarre acts you will ever see, this troupe of artists have performed around the world conquering everything in their path: Paris, Sydney, Stockholm and New York have all fallen for their dysfunctional charms. Promising an unforgettable night of thrills, shock, laughs and entertainment this is one event guaranteed to deliver a brilliant night out during the party season. Not suitable for children, no guests under 18 will be admitted.

SCHEDULE: Tuesday – Sunday. Dark Monday. Performances 23 November to 29 January.

VENUE: Roundhouse, Chalk Farm Road, London, NW1. Nearest Tube: Chalk Farm or Camden Town



THE LADYKILLERS

PLAY

The celebrated black comedy comes to life in a hilarious and thrilling new adaption by Graham Linehan (Father Ted) and directed by Sean Foley (The Play What I Wrote), and featuring a stellar comedic cast including Peter Capaldi (The Thick of It), James Fleet (The Vicar of Dibley), Ben Miller, Olivier winner Clive Rowe with Marcia Warren as Mrs Wilberforce. A sweet little old lady, alone in her house, is pitted against a gang of criminal misfits who want to involve her unwittingly in a heist job. But things do not go well and plans start to unravel in spectacular and hilarious fashion.

SCHEDULE: Monday – Saturday. Dark Sunday. Performances from 26 November.

VENUE: Gielgud Theatre, Shaftesbury Avenue, London, W1D. Nearest Tube: Piccadilly Circus



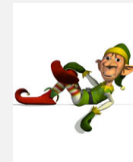
THE LAZY ELF

PLAY

Based at Santa's home at the North Pole, Larry (The Lazy Elf) can think of every excuse possible not to finish making toys for delivery on Christmas Day. He really is LAZY! Santa & Mrs Claus, and the other annoyed elves show Larry how important it is to do his part and be kind. With a little help from the children in the audience Larry learns his lesson and Christmas is saved! Each child receives a free toy at the end of the show!

SCHEDULE: Performance Schedule Varies - Please see calendar online. Performs 10 through 23 Dec.

VENUE: Arts Theatre, 6/7 Great Newport St, London, WC2H. Nearest Tube: Leicester Square



LEGALLY BLONDE

MUSICAL

College sweetheart and homecoming queen Elle Woods doesn't take no for an answer. So when her boyfriend Warner dumps her for someone serious, Elle puts down the credit card, hits the books, and heads for Harvard Law School! Based on the hit movie of the same name, *Legally Blonde* the musical is led by a dynamic creative team, including Tony award®-winning director and Olivier® nominated choreographer Jerry Mitchell (*Hairspray*).

SCHEDULE: Monday, Wednesday – Sunday. Dark Tuesday.

VENUE: Savoy Theatre, Strand, London, WC2. Nearest Tube: Charing Cross or Embankment



LES MISÉRABLES

MUSICAL

Cameron Mackintosh's legendary production of *Les Misérables* is indisputably the world's most popular musical. This international award-winning show sweeps its audience through an epic tale of passion and power set against the backdrop of a nation in the grip of revolution. A spectacular adaptation of Victor Hugo's masterpiece novel, *Les Misérables* continues to thrill audiences night after night.

SCHEDULE: Monday – Saturday. Dark Sunday.

VENUE: Queen's Theatre, Shaftesbury Avenue, London W1. Nearest Tube: Piccadilly Circus



THE LION IN WINTER

PLAY

Trevor Nunn directs Robert Lindsay and Joanna Lumley in William Goldman's tale of a family Christmas becoming a family at war. Henry II, not so young as he was, invites his estranged wife Eleanor of Aquitaine, and his three sons, Richard, Geoffrey and John, to spend the festive season with him, his mistress Princess Alais, and her brother, the young King Philip of France. Will Henry name who is to be his successor as King of England? Their yuletide celebration turns into a combat zone of deceit, betrayal, bitter power games, sexual politics and scabrous wit.

SCHEDULE: Monday – Saturday. Dark Sunday. Performances 04 November through 28 January 2012.

VENUE: Theatre Royal Haymarket, Haymarket, London, SW1. Nearest Tube: Piccadilly Circus



WHAT'S ON

LONDON 2011-2012

Showbiz
Events & Travel

EMAIL: setnz@showbizeta.com | PHONE: 0800 SHOWBIZ (0800.746.9249)

www.showbizeta.com

THE LION KING

MUSICAL

Set against the majesty of the Serengeti Plains and to the evocative rhythms of Africa, Disney's multi-award winning musical *The Lion King* will redefine your expectations of theatre. A spectacular visual feast, this adaptation of Disney's much-loved film transports audiences to a dazzling world that explodes with glorious colours, stunning effects and enchanting music. At its heart, *The Lion King* is the powerful and moving story of Simba - the epic adventure of his journey from wide-eyed cub to his destined role as King of the Pridelands.

SCHEDULE: Tuesday – Sunday. Dark Monday.

VENUE: Lyceum Theatre, Wellington Street, London, WC2. Nearest Tube: Covent Garden



LONG DAY'S JOURNEY INTO NIGHT

PLAY

David Suchet stars as James Tyrone in this Eugene O'Neill classic. Set in 1912, it follows the Tyrone family through a mesmerising day and night, as they battle their demons, their pasts, and one another the play depicts the struggle for survival of each family member as they threaten to drift further into oblivion. Directed by Anthony Page, this multi-award winning play is one of the greatest American plays written in the twentieth century.

SCHEDULE: Monday – Saturday. Dark Sunday. Performances from 02 April 2012.

VENUE: Adelphi Theatre, Strand, London, WC2. Nearest Tube: Charing Cross



MAMMA MIA!

MUSICAL

Night after night, audiences are having the time of their lives at *Mamma Mia!*. Catherine Johnson's sunny, funny story of love, laughter and friendship has been thrilling London audiences for over 10 years. More recently it became a hit movie when the three women who created the worldwide stage smash adapted it for the silver screen. Inspired by the storytelling magic of ABBA's songs, from "Dancing Queen" and "Take A Chance On Me" to "Super Trouper" and "Thank You For The Music".

SCHEDULE: Monday – Saturday. Dark Sunday.

VENUE: Prince of Wales Theatre, Coventry Street, London, W1. Nearest Tube: Piccadilly Circus



MATILDA THE MUSICAL

MUSICAL

The Royal Shakespeare Company's sensational production of Roald Dahl's much-loved story bursts onto the West End stage in this brand new musical version by Dennis Kelly and award-winning musician and comedian Tim Minchin. Children and adults alike will be thrilled and delighted by the story of the special little girl with an extraordinary imagination. Directed by Matthew Warchus with choreography by Peter Darling (*Billy Elliot the Musical*). The Evening Standard hails this production as "a triumph. Enchanting, bold and ingenious."

SCHEDULE: Monday – Saturday. Dark Sunday. Performances from 18 October.

VENUE: Cambridge Theatre, Earlham Street London, WC2H. Nearest Tube: Covent Garden



MIDNIGHT TANGO

EVENT

Vincent Simone and Flavia Cacace have dazzled television audiences for six series of the BBC's *Strictly Come Dancing* with their stunning Tango routines. Now they have created their own breathtaking evening, bringing to life all the drama, sensuality and elegance of this most exciting of dance forms. Set in a bar in downtown Buenos Aires, Vincent and Flavia and ten of the finest Tango dancers in the world will take you on a journey into the heart of this intoxicating city, as danger and excitement, joy and jealousy, pain and passion combine into a spectacular and explosive evening.

SCHEDULE: Monday – Saturday. Dark Sunday. Performances 20 January through 31 March 2012.

VENUE: Aldwych Theatre, Aldwych, London, WC2B. Nearest Tube: Drury Lane



MILLION DOLLAR QUARTET

MUSICAL

The Tony Award-winning story of the night ELVIS PRESLEY, JOHNNY CASH, CARL PERKINS and JERRY LEE LEWIS came together to make music, and ended up making history. Inspired by the actual event, that took place on 4 December 1956 at Sun Records in Memphis, this ecstatic and engaging musical is a story of fame, friendship, discovery, divided loyalties, professional jealousy and incredible music as four of the music industry's most extraordinary talents, all in their creative prime, made music together for the first and only time in their careers.

SCHEDULE: Monday – Saturday. Dark Sunday.

VENUE: Noel Coward Theatre, St Martin's Lane, London, WC2. Nearest Tube: Leicester Square



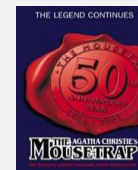
THE MOUSETRAP

PLAY

Agatha Christie's *The Mousetrap* has kept audiences guessing for over five decades. This world record-breaking production continues to enthral, to entertain and to thrill audiences still flocking to St Martin's Theatre from every corner of the globe. In her own inimitable style, Dame Agatha Christie has created an atmosphere of shuddering suspense and a brilliantly intricate plot where murder lurks around every corner. Be part of history. Get tickets to *The Mousetrap*.

SCHEDULE: Monday – Saturday. Dark Sunday.

VENUE: St Martin's Theatre, West Street, London, WC2. Nearest Tube: Leicester Square



WHAT'S ON

LONDON 2011-2012

Showbiz
Events & Travel

EMAIL: setnz@showbizeta.com | PHONE: 0800 SHOWBIZ (0800.746.9249)

www.showbizeta.com

MUCH ADO ABOUT NOTHING

PLAY

Driven along by a romance all the more charming for being unacknowledged, MUCH ADO ABOUT NOTHING is a miracle of comic and dramatic suspense and gives us, in the bantering Beatrice and Benedick, two of Shakespeare's wittiest, most lovable pair of lovers.



SCHEDULE: Performance Schedule Varies - Please see calendar online. Through 01 October.

VENUE: Shakespeare's Globe Theatre, 21 New Globe Walk Bankside, London, SE1.

NOISES OFF

PLAY

Michael Frayn's side-splitting comedy follows the touring production of a dreadful sex comedy Nothing On, as it travels around the country. From the disastrous dress rehearsal with the cast still fumbling with entrances and exits and bothersome props, to the final performance of missed cues and forgotten lines, Noises Off portrays the explosive personal relationships that have led to off-stage shenanigans and on-stage bedlam.



SCHEDULE: Tuesday – Sunday. Dark Monday. Performances from 03 December.

VENUE: Old Vic Theatre, Waterloo Road, London, SE1 Nearest Tube: Waterloo

THE NUTCRACKER

EVENT

Journey back in time with English National Ballet to a frost-covered, gas-lit London. Join Clara, her Nutcracker and the magician Drosselmeyer in this traditional festive tale for all the family. In a world of Edwardian elegance, The Nutcracker brings to life the eternally popular Tchaikovsky score featuring the Dance of the Sugar Plum Fairy and the Waltz of the Flowers. A magical, memorable and unmissable Christmas treat. Choreography by Wayne Eagling, based on a concept by Toer van Schayk and Wayne Eagling.



SCHEDULE: Performances 08 to 30 December. Schedule Varies - Please see calendar online.

VENUE: London Coliseum, St. Martin's Lane, London, WC2. Nearest Tube: Trafalgar Square

THE NUTCRACKER

EVENT

Get swept up in the enchantment of Christmas with one of the most popular family shows of all time with Sir Peter Wright's inspired version of Tchaikovsky's best-loved ballet, as performed by the Birmingham Royal Ballet. After sneaking downstairs at midnight to play with her new Nutcracker doll, Clara magically finds herself in a fantasy of toy soldiers, giant rats, snow fairies and magic before she is finally transformed into a beautiful ballerina. Come and watch this breathtaking set transform before your eyes, a treat for adults and children.



SCHEDULE: Performances 27 to 30 December. Schedule Varies - Please see calendar online.

VENUE: The O2 Arena, Millennium Way, London SE10. Nearest Tube: North Greenwich

THE NUTCRACKER

EVENT

The designs for this now-classic Royal Ballet production re-create a 19th century image of Christmas, and Peter Wright's production tells the story clearly from its mysterious start to its happy conclusion. Tchaikovsky's music is some of the most instantly memorable in all ballet, with a wealth of famous melodies. The Nutcracker is classical ballet at its most approachable and visually entrancing, with something for everyone to enjoy, from the youngest in the family to the oldest – a Christmas present that brings a special magic each year it returns.



SCHEDULE: Performances 03 December to 18 January. Schedule Varies - Please see calendar online.

VENUE: Royal Opera House, Covent Garden, London, WC2E. Nearest Tube: Covent Garden

THE PITMEN PAINTERS

PLAY

Lee Hall's highly amusing, deeply moving and always entertaining play about ordinary men doing the extraordinary makes its West End debut after celebrated seasons at the National Theatre and Broadway. In 1934, a group of Ashington miners hired a professor to teach an art appreciation evening class. Rapidly abandoning theory in favour of practice, the pitmen began to paint – prolifically. Within a few years avant-garde artists became their friends and their work was acquired by prestigious collectors; but every day they continued to work, as before, down the mine.



SCHEDULE: Monday – Saturday. Dark Sunday. Performances from 05 October.

VENUE: Duchess Theatre, Catherine Street, London, WC2B. Nearest Tube: Covent Garden

THE PLAYBOY OF THE WESTERN WORLD

PLAY

Set in a small village on the west coast of County Mayo, it's the story of lonely dreamer Christy Mahon who takes refuge in Michael Flaherty's pub, claiming that he has killed his oppressive father. Christy beguiles the locals with his tall and dramatic tale of bravery in the face of danger and becomes an instant hero. He both charms the village women and captures the heart of the landlord's fiery daughter Pegeen. However, when his tale turns out to be less straightforward than they first thought, the simmering violence of the villagers comes to light.



SCHEDULE: Tuesday – Sunday. Dark Monday. Performances through 26 November.

VENUE: Old Vic Theatre, Waterloo Road, London, SE1 Nearest Tube: Waterloo

WHAT'S ON

LONDON 2011-2012

Showbiz
Events & Travel

EMAIL: setnz@showbizeta.com | PHONE: 0800 SHOWBIZ (0800.746.9249)

www.showbizeta.com

PRISCILLA QUEEN OF THE DESERT

MUSICAL

Adapted from the Oscar-winning film, *Priscilla Queen of the Desert* is Australia's most successful and best-loved musical which has already been seen by over one million people. *Priscilla* is the heart warming, uplifting adventure of three friends, a glamorous performing trio, who hop aboard a battered old bus (Priscilla) to take their show to the middle of the Australian outback. These three larger-than-life characters go searching for love and friendship and end up finding more than they could ever have dreamed.

SCHEDULE: Monday – Saturday. Dark Sunday. Performances through 31 December.

VENUE: Palace Theatre, Shaftesbury Avenue, London, W1. Nearest Tube: Leicester Square



THE RAILWAY CHILDREN

PLAY

THE RAILWAY CHILDREN – now playing live from Waterloo Station Theatre. After two sell out and critically acclaimed summer runs at the National Railway Museum with York Theatre Royal, this breathtaking theatrical event is now live in London, transforming the former Eurostar platforms at Waterloo Station! One of the country's best loved novels comes to life using this unique theatre setting that has been converted into a 1,000 seat venue with audiences sitting either side of a real railway track.

SCHEDULE: Monday, Wednesday – Sunday. Dark Tuesday. Performances through 08 January.

VENUE: The Waterloo Station Theatre, London, SE1 Nearest Tube: Waterloo



THE RAT PACK LIVE FROM LAS VEGAS

MUSICAL

From 9 January the Christmas tree and decorations will be put away and audiences can enjoy the original The Rat Pack Live From Las Vegas. It was there in 1960, when for the first time Frank Sinatra, Dean Martin, Sammy Davis, Jr, Joey Bishop, and Peter Lawford performed together on stage. From then on, they were forever known as the Rat Pack. This spectacular production celebrates the incredible singing talent of three world-famous entertainers and some of the finest music ever recorded. If you wish you'd swung with the hardest partying pack in town, now's your chance!

SCHEDULE: Monday – Saturday. Dark Sunday. Performances 09 January to 21 January 2012.

VENUE: Wyndham's Theatre, Charing Cross Road, London WC2H. Nearest Tube: Leicester Square



ROCK OF AGES

MUSICAL

This "absurdly enjoyable rock musical" (The New York Times) is the hilarious story of a small town girl and a big city rocker falling in love to the greatest songs of the 1980s, including Don't Stop Believin, We Built This City, The Final Countdown, Wanted Dead or Alive, and Here I Go Again. This Tony Award-nominated hit is an awesomely good time where big hair meets big dreams!

SCHEDULE: Monday – Saturday. Dark Sundays.

VENUE: Shaftesbury Theatre, Shaftesbury Ave., London, WC2. Nearest Tube: Tottenham Court Rd.



RUBY WAX - LOSING IT

PLAY

At some point in our lives one in four of us will be affected by mental illness - bring three friends! Ruby Wax had it all - career, dream house, husband, kids. So when was the moment she realised she was the 1 in 4? Ruby's acerbic, honest humour and Judith Owen's touching songs are both poignant and laugh-out-loud funny. This show gives you the chance to explore the ups and downs of mental illness, its stigmas and the freedom you discover when you share the darkest moments of your life.

SCHEDULE: Monday – Saturday. Dark Sunday. Performances through 01 October.

VENUE: Duchess Theatre, Catherine Street, London, WC2B. Nearest Tube: Covent Garden



SHREK

MUSICAL

Join our unlikely hero and his loyal steed Donkey as they set off on a quest to rescue the beautiful (if slightly temperamental) Princess Fiona from her tower, guarded by a fire breathing love-sick dragon. Add the diminutive Lord Farquaad, a gang of fairytale misfits, and a biscuit with attitude, and you've got this year's must see new musical comedy – SHREK THE MUSICAL!

SCHEDULE: Monday, Wednesday – Sunday. Dark Tuesday.

VENUE: Theatre Royal, Drury Lane, Catherine Street, London, WC2. Nearest Tube: Covent Garden



STOMP

DANCE

Stomp is now FRESHER, FASTER AND FUNNIER than ever before, with new routines, new choreography and new music. This multi-award winning show has a universal language of rhythm, theatre, comedy and dance. Eight performers use everything from Zippo lighters, plastic bags, bin lids and even the kitchen sink to hammer out an explosively feel good rhythm.

SCHEDULE: Monday, Thursday – Sunday. Dark Tuesday and Wednesday with exceptions.

VENUE: Ambassadors Theatre, West Street, London, WC2. Nearest Tube: Leicester Square



WHAT'S ON

LONDON 2011-2012

Showbiz
Events & Travel

EMAIL: setnz@showbizeta.com | PHONE: 0800 SHOWBIZ (0800.746.9249)

www.showbizeta.com

THE TEMPEST

PLAY

Trevor Nunn directs Ralph Fiennes in William Shakespeare's *The Tempest* as the third production of his electrifying season at the Theatre Royal Haymarket. Marooned and left to die on a remote island, Prospero can command spirits, create apparitions and manipulate the elements. By using his magic, he assembles his enemies to take revenge on them, and in the process awakens in Miranda, his teenage daughter, her first experience of love. The theme of reconciliation gives immense emotional force to Shakespeare's farewell to the stage.

SCHEDULE: Monday – Saturday. Dark Sunday. Please enquire for availability. Through 29 Oct.

VENUE: Theatre Royal Haymarket, Haymarket, London, SW1. Nearest Tube: Piccadilly Circus



TERRIBLE ADVISE

PLAY

The Menier Chocolate Factory is delighted to announce the world premiere of Saul Rubinek's *Terrible Advise* for a limited 8-week season. Directed by Frank Oz, the cast includes Sharon Horgan, Andy Nyman and Caroline Quentin. Stanley (Stinky to his friends) and Jake are best friends. Hedda and Delila are best friends. Jake loves Hedda; Stinky loves Delila. Stinky plans to marry Delila...until Jake shares some secrets and then gives him some advice...

SCHEDULE: Tuesday – Sunday. Dark Monday. Performances through 12 November.

VENUE: Menier Chocolate Factory, 53 Southwark St., London, SE1. Nearest Tube: London Bridge



THRILLER - LIVE

MUSICAL

A stage and video spectacular celebrating the wonderful career of the World's Greatest Entertainer – Michael Jackson. The amazing show featuring over 20 performers with a full company of singers, dancers and live band celebrates the King of Pop like never before! With original choreography from MTV award winning choreographer, LaVelle Smith Jr. and brilliant vocal performances, Jackson's amazing songs and videos are brought to life on stage in a spectacular and sensational way.

SCHEDULE: Tuesday – Sunday. Dark Monday.

VENUE: Lyric Theatre, Shaftesbury Avenue, London, W1. Nearest Tube: Piccadilly Circus



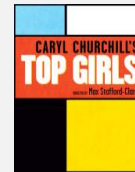
TOP GIRLS

PLAY

The smash-hit transfer from Chichester of playwright Caryl Churchill's modern British classic in this powerful and brilliant new production. It's Thatcher's England and hard-nosed businesswoman Marlene is hosting a dinner party to celebrate her promotion to MD of the Top Girls Employment Agency. Her guests – all powerful women from myth and history – create an extraordinary gathering. A provocative study of powerful women in Thatcher's Britain, the play examines the compromises made by women in the quest for success, and what happens to those left behind.

SCHEDULE: Monday – Saturday. Dark Sunday. Performances through 15 October.

VENUE: Trafalgar Studios, Whitehall, London, SW1A. Nearest Tube: Trafalgar Square



WAR HORSE

PLAY

At the outbreak of World War One, Joey, young Albert's beloved horse, is sold to the cavalry and shipped to France. He's soon caught up in enemy fire, and fate takes him on an extraordinary odyssey, serving on both sides before finding himself alone in no man's land. Albert cannot forget Joey and, still not old enough to enlist, he embarks on a treacherous mission to find him and bring him home. A transfer from the hugely successful run at the National Theatre *War Horse* is based on the celebrated novel by the Children's Laureate (2003-05), Michael Morpurgo.

SCHEDULE: Monday – Saturday. Dark Sunday.

VENUE: New London Theatre, Drury Lane, London, WC2. Nearest Tube: Holborn or Covent Garden



WE WILL ROCK YOU

MUSICAL

Seen by over 10 million people worldwide, *We Will Rock You* is now storming into its 9th year and is the biggest rock theatrical event of the century! This sensational mega-hit phenomenon continues to raise the roof and brings audiences to their feet with rapturous standing ovations every night. Created by Queen and Ben Elton, the show includes over 24 of Queen's classic hits, including "Killer Queen", "Bohemian Rhapsody", "Radio Ga Ga"... and, of course, "We Will Rock You".

SCHEDULE: Monday – Saturday. Dark Sunday.

VENUE: Dominion Theatre, Tottenham Court Road, London, W1. Nearest Tube: Tottenham Court Rd.



WICKED

MUSICAL

Based on the acclaimed novel by Gregory Maguire that re-imagined the stories and characters created by L. Frank Baum in *The Wonderful Wizard of Oz*, *Wicked* tells the incredible untold story of an unlikely but profound friendship between two girls who first meet as sorcery students. Their extraordinary adventures in Oz will ultimately see them fulfill their destinies as Glinda The Good and the Wicked Witch of the West.

SCHEDULE: Monday – Saturday. Dark Sunday.

VENUE: Apollo Victoria Theatre, Wilton Road, London, SW1. Nearest Tube: Victoria



WHAT'S ON

LONDON 2011-2012

Showbiz
Events & Travel

EMAIL: setnz@showbizeta.com | PHONE: 0800 SHOWBIZ (0800.746.9249)

www.showbizeta.com

THE WIZARD OF OZ

MUSICAL

Follow the yellow brick road over the rainbow for Andrew Lloyd Webber's glittering new production of The Wizard of Oz. Starring Michael Crawford as The Wizard and Danielle Hope (winner of the BBC's smash hit Over the Rainbow) as Dorothy. Developed from the ever popular MGM screenplay this production, totally reconceived for the stage, contains all the much-loved songs from the Oscar winning movie score, all the favourite characters and iconic moments, plus a few surprises along the way. It's the most magical adventure of them all!

SCHEDULE: Tuesday – Sunday. Dark Monday.

VENUE: London Palladium, Argyll Street, London, W1. Nearest Tube: Oxford Circus



THE WOMAN IN BLACK

PLAY

Since 1989, over 7 million people have lived to tell the tale of one of the most exciting, spooky, gripping and successful theatre events ever staged. Unanimously acclaimed by the critics, Stephen Mallatrat's adaptation of Susan Hill's bestselling novel combines the power and intensity of live theatre with a cinematic quality inspired by the world of film noir. It is a formula that provides audiences with an evening of unremitting drama as they are transported into a terrifying and ghostly world.

SCHEDULE: Monday – Saturday. Dark Sunday.

VENUE: Fortune Theatre, Russell Street, London, WC2. Nearest Tube: Covent Garden



YES, PRIME MINISTER

PLAY

Thirty years ago the first episode of Yes, Minister was broadcast and went on to become television's most successful political comedy ever. It and the equally successful sequel, Yes, Prime Minister, captured a niche in the political consciousness of the nation. The original writers of these classic series have reunited for this anniversary production and Prime Minister Jim Hacker, his Cabinet Secretary Sir Humphrey Appleby and his Principal Private Secretary Bernard Woolley are all back, in a brand new play.

SCHEDULE: Monday – Saturday. Dark Sunday. Performances through 19 November.

VENUE: Gielgud Theatre, Shaftesbury Avenue, London, W1D. Nearest Tube: Piccadilly Circus

